

# Senomix Timesheets



## Guide for Linux Computers

v4.1

## Notice

The information in this reference was current when published. Senomix reserves the right to revise and improve its products. All documentation is therefore subject to change without notice.

## Copyright

Under copyright laws, the contents of this document may not be copied, photocopied, reproduced, translated, or reduced to any electronic medium or machine-readable form, in whole or in part, without prior written consent of:

**Senomix Software Inc.**

© Copyright 2012 Senomix Software Inc.  
1316 Dresden Row  
Halifax, Nova Scotia  
B3J 2J8 Canada

## Trademarks

Excel®, Visual Basic® and Microsoft Office XP® are registered trademarks of Microsoft Incorporated.

Trademarked names are used throughout this document. Rather than place a symbol at each occurrence, trademarked names are designated with initial capitalization. Inclusion or exclusion is not a judgment on the validity or legal status of the terms.

## Table of Contents

1.0 - Introduction .....	1
2.0 - Installation .....	2
3.0 - Creating Printable Reports .....	4

## 1.0 - Introduction

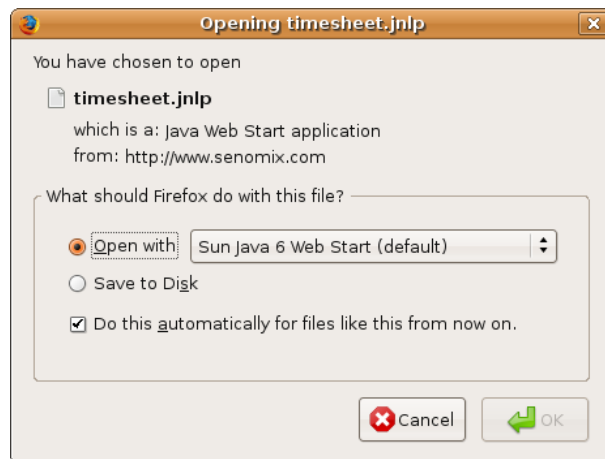
This guide outlines the differences a user will encounter when installing and using the Senomix Timesheets Timesheet Entry program on a Linux-based computer. Almost all application functionality is the same between Windows and Linux PCs, with the few differences between those platforms outlined in these pages.

## 2.0 - Installation

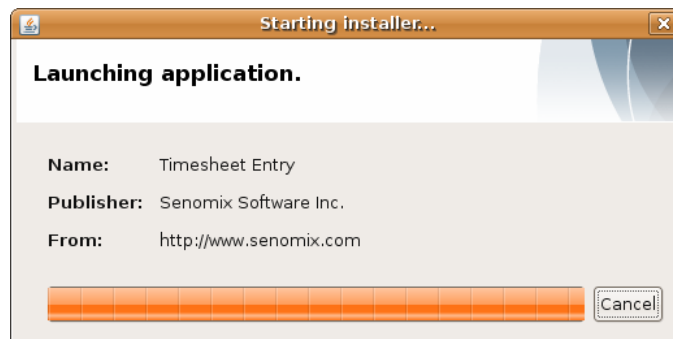
Linux installation of the Timesheet Entry application is performed using Java Web Start, the server-side configuration of which is described in the Installation Guide for Senomix Timesheets.

Please refer to Section 4.2 of the Installation Guide if you have not yet placed the Senomix Timesheets client applications on your server.

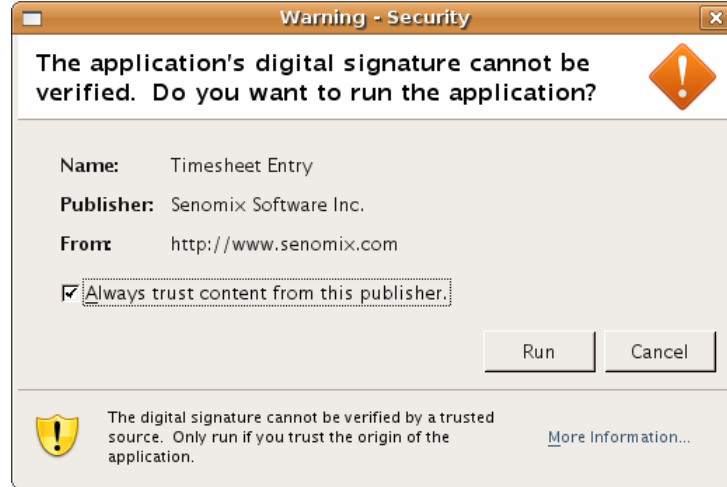
Before clicking your office's web page link to install the Timesheet Entry application, you must first have installed the Java Runtime Environment (version 1.6 or later) and the msttcorefonts package (Microsoft Core Fonts -- to provide your computer with the Arial font). Once those components are in place, you can click your office's Timesheet Entry Java Web Start web page link. After clicking that link, your browser should prompt you to confirm how the .jnlp file (which contains the application launch information) should be handled, such as this example of clicking the link from a Firefox web browser:



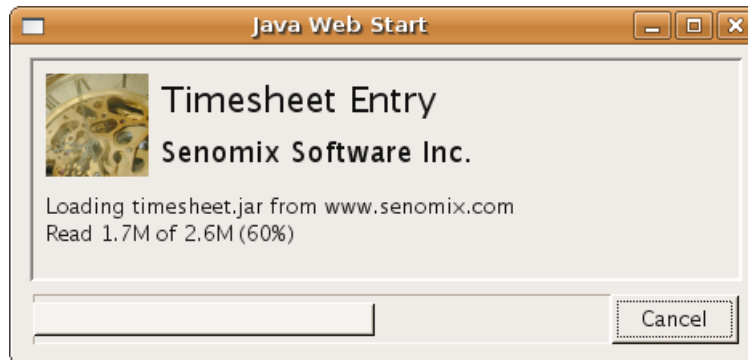
As shown, your browser should already have associated the opening of this file with Sun's Java Web Start. After toggling the "Do this automatically for files like this form now on" checkbox to "on", click the "Ok" button to begin the program's installation. A Installer dialog should then appear:



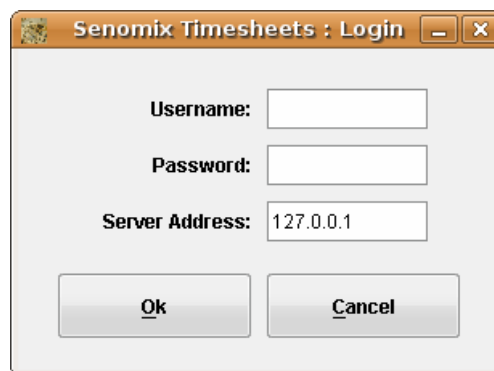
Followed almost immediately after by a security prompt:



To grant Senomix Timesheets permission to run on your computer, toggle the "Always trust content from this publisher" checkbox to "on" and then click the "Run" button. The network installation will then continue:



After the installation has completed, the Senomix Timesheets login dialog box will be displayed:

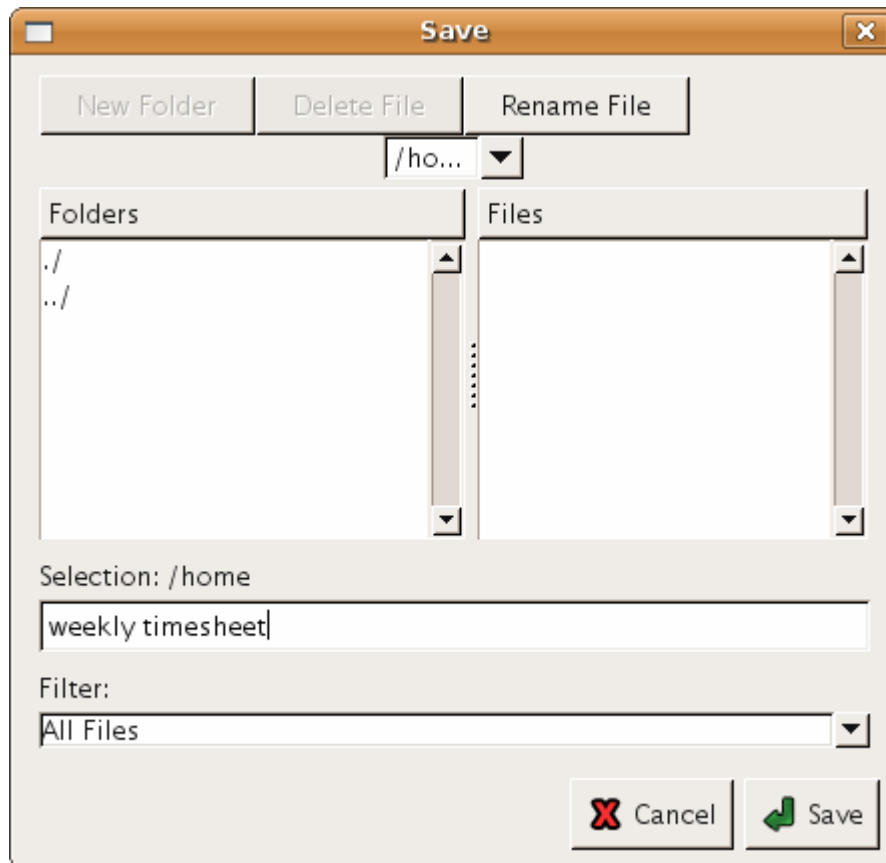


You can then log in to Senomix Timesheets and use the system as outlined in the Timesheet Entry Users Guide. To start the Timesheet Entry application in the future, you can click the same web page link you used to install the program, or you can create a Linux icon for the launching .jnlp file as you would like.

### 3.0 - Creating Printable Reports

In the Timesheet Entry application, a user can create printable timesheets or listings of timesheet comments and work estimates. As report preview is not available on Linux computers, a Linux user will always be prompted to first save their report to one of their directories before it will be available for printing or review.

After clicking one of the “Get Printable”, “Get Comments” or “Get Estimates” buttons for a printable report, a save dialog will be displayed in which you can note your report’s name and where you would like it to be placed on your computer:



After the report has been saved, it can then be opened in a web browser for review or printing as you would like.